



Versaterm Forensics

Purpose-Built Forensic Lab
Management Software

 versaterm



Strong science deserves stronger evidence flow.

Forensic laboratories are built on disciplined processes, specialized expertise and high standards. What often shapes performance just as much is how clearly evidence, documentation, analytical results and reporting move together across the lab.

Versaterm Forensics helps laboratories manage that work in one connected environment. Built by forensic scientists for forensic scientists, it supports submissions, evidence tracking, analytical processes, reporting and operational oversight in a way that fits the realities of forensic work.



The operational challenge is rarely one broken step. It is the effort required to keep every step connected.

Most labs already have strong people and strong processes. What becomes harder over time is maintaining continuity across disciplines, evidence movement, quality records and case reporting as complexity grows.

That friction is easy to normalize because the work still gets done. It often shows up as duplicate entry, extra checks, separate records and manual follow-through between steps that should already be aligned.

What Versaterm Forensics is built to do

Versaterm Forensics is designed to reduce that burden by giving laboratories a clearer operational view of cases, evidence and workflows across the full forensic process.



Bring evidence, analysis and reporting into one operational view

Versaterm Forensics integrates evidence tracking, analytical results, laboratory management information and reporting to give teams a more complete view of the case as work moves through the lab.



Support the way your lab works across disciplines

The platform is configurable to address the needs of multiple testing disciplines and laboratory processes, rather than forcing labs to adapt to a rigid system structure.



Strengthen quality through a more unified workflow

From test methods and training records to instrument validation, maintenance and performance verification, Versaterm Forensics helps labs manage quality-related information with greater consistency.



Improve clarity without adding complexity

Configurable templates, interfaces, reports and portal access help reduce duplication, improve follow-through and support clearer communication across internal teams and external partners.

Built for the work around the work

Forensic lab performance depends on more than final results. It also depends on how well the lab can manage the work surrounding those results every day.

That includes:



evidence tracking
and chain of custody



consumables and
reagent readiness



analytical workflows
and result reporting



case visibility for
supervisors and partners



training records and
validation history

Versaterm Forensics brings those operational layers closer together so labs can spend less time reconnecting information and more time moving work forward with confidence.

Versaterm LIMS-plus

The foundation of the platform, Versaterm LIMS-plus brings evidence tracking, analytical results and laboratory management information into one connected case management environment. It gives laboratories a stronger operational view of active work while supporting the standards, controls and reporting needs that shape everyday forensic performance.



Unified case visibility

Bring evidence tracking, analytical results and laboratory management information into one operational view.



Stronger evidence integrity

Support barcoding, inventory controls and chain of custody practices that help reinforce accuracy and accountability.

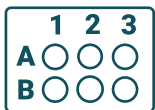


Clearer operational oversight

Use configurable reporting and metrics to monitor case activity, performance and resource needs with greater confidence.

Versaterm DNA

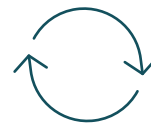
For laboratories managing DNA casework and databanks, Versaterm DNA adds structure and automation where workflow complexity can grow quickly. It helps teams carry sample information, instrument activity and process status forward with better continuity across the full DNA workflow.



Better sample workflow management
Add, arrange and monitor samples through each phase of the DNA process with greater structure.



Less manual handling
Integrate with lab instrumentation to upload sample data and import results more efficiently.



Stronger continuity across the process
Maintain instrument maintenance and calibration history alongside active DNA workflow information.

Versaterm Consumables

Laboratory readiness depends on more than instruments and casework. It also depends on having the right materials available, compliant and easy to track. Versaterm Consumables helps bring greater visibility and control to the management of raw chemicals, prepared reagents and analytical supplies.



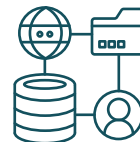
Greater inventory visibility

Track raw chemicals, prepared reagents and analytical supplies in one place.



Support compliant usage

Monitor expiration dates, reorder points and stock levels so materials are easier to manage before they become an issue.



More controlled preparation workflows

Create templates and requests that help staff manage supplies with more consistency.

Versaterm Property & Evidence

For laboratories and forensic units that also manage property, Versaterm Property & Evidence extends the platform into evidence item barcoding, tracking and broader administrative control. It helps bring property activity into the same operational picture, supporting stronger continuity across evidence handling and storage.



Reinforced chain of custody

Use barcoding and tracking to support more secure evidence handling and transfer activity.



Better storage and records control

Manage property-related activity with stronger visibility into location, movement and status.



Administrative insight

Access statistical and administrative reporting that supports broader evidence and property oversight.

Deployment and included services

Versaterm Forensics is available as either a traditional on-premises implementation or a cloud-based SaaS subscription, giving laboratories flexibility in how they deploy and maintain the platform. The SaaS model adds ongoing infrastructure support designed to strengthen reliability, scalability and operational continuity over time.



On-premises

Deployed and managed within your agency's own environment and infrastructure.



Cloud-based SaaS

Delivered through a secure cloud subscription with ongoing hosting, monitoring and updates.



Why this matters for laboratory leadership

A clearer view of operations

- See case progress, evidence activity and operational performance with more visibility across the lab.

Stronger continuity across the process

- Support evidence integrity, quality records and reporting in a way that keeps the broader workflow better aligned.

Less time spent reconnecting information

- Reduce duplicate entry, manual follow-through and the effort required to bridge disconnected records and steps.

More support for the work that matters

- Give analysts and supervisors more usable visibility into active work so time can stay closer to analysis, review and quality.

A stronger foundation for defensibility and efficiency

- Support standard practices, operational consistency and timely case progression in one purpose-built environment.



Designed by forensic scientists for forensic scientists

Versaterm Forensics is built to support the operational realities of forensic laboratories with configurable tools, integrated workflows and a clearer line of sight from submission through reporting. It helps labs strengthen the process behind the science so the work can move with greater clarity, consistency and confidence.

Learn more >

About Versaterm

Versaterm is a global public safety solutions company helping agencies transform their organizations by providing innovative solutions and expertise. We measure our success through long-term partnerships and responsive service as well as the day-to-day impact our technology has on the people who rely on it. Learn more at versaterm.com